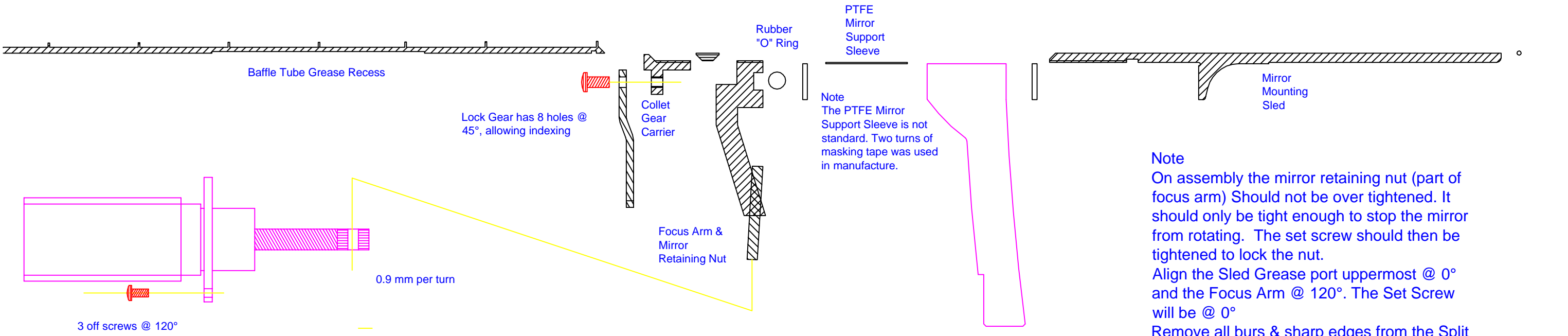
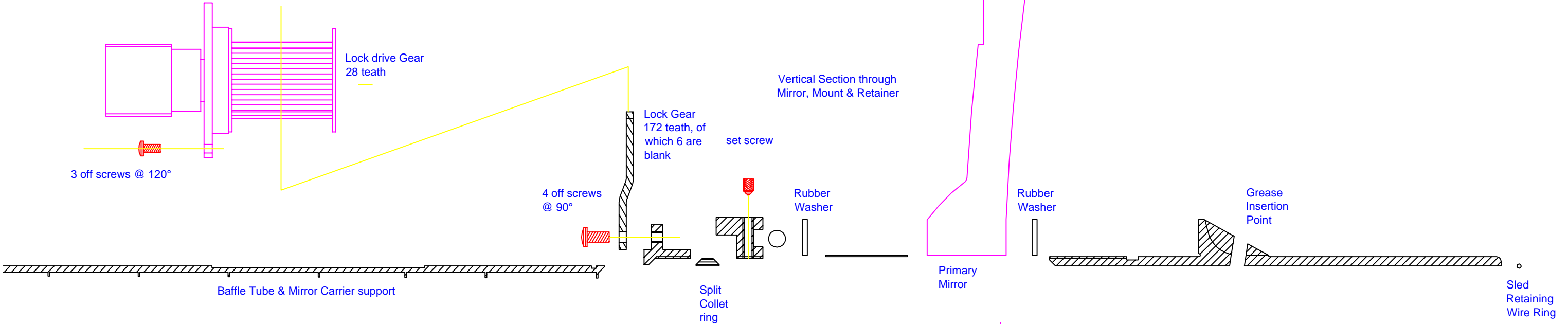


Meade LX200GPS 8" OTA, Vintage September 2005

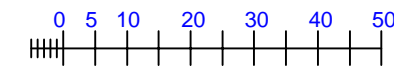
Section through Mirror Focus Lock, Rotated 120° anti clockwise.

This gear is mounted on a spline & is spring loaded. It can slide when the Lock Gear exceeds it's length.



Section through Mirror Focus Knob, rotated 30° anti clockwise

Note
On assembly the mirror retaining nut (part of focus arm) should not be over tightened. It should only be tight enough to stop the mirror from rotating. The set screw should then be tightened to lock the nut.
Align the Sled Grease port uppermost @ 0° and the Focus Arm @ 120°. The Set Screw will be @ 0°
Remove all burs & sharp edges from the Split Collet Ring



Scale: 1 drawing unit = 1mm